

プリント配線板生産動態統計

出所：経済産業省機械統計

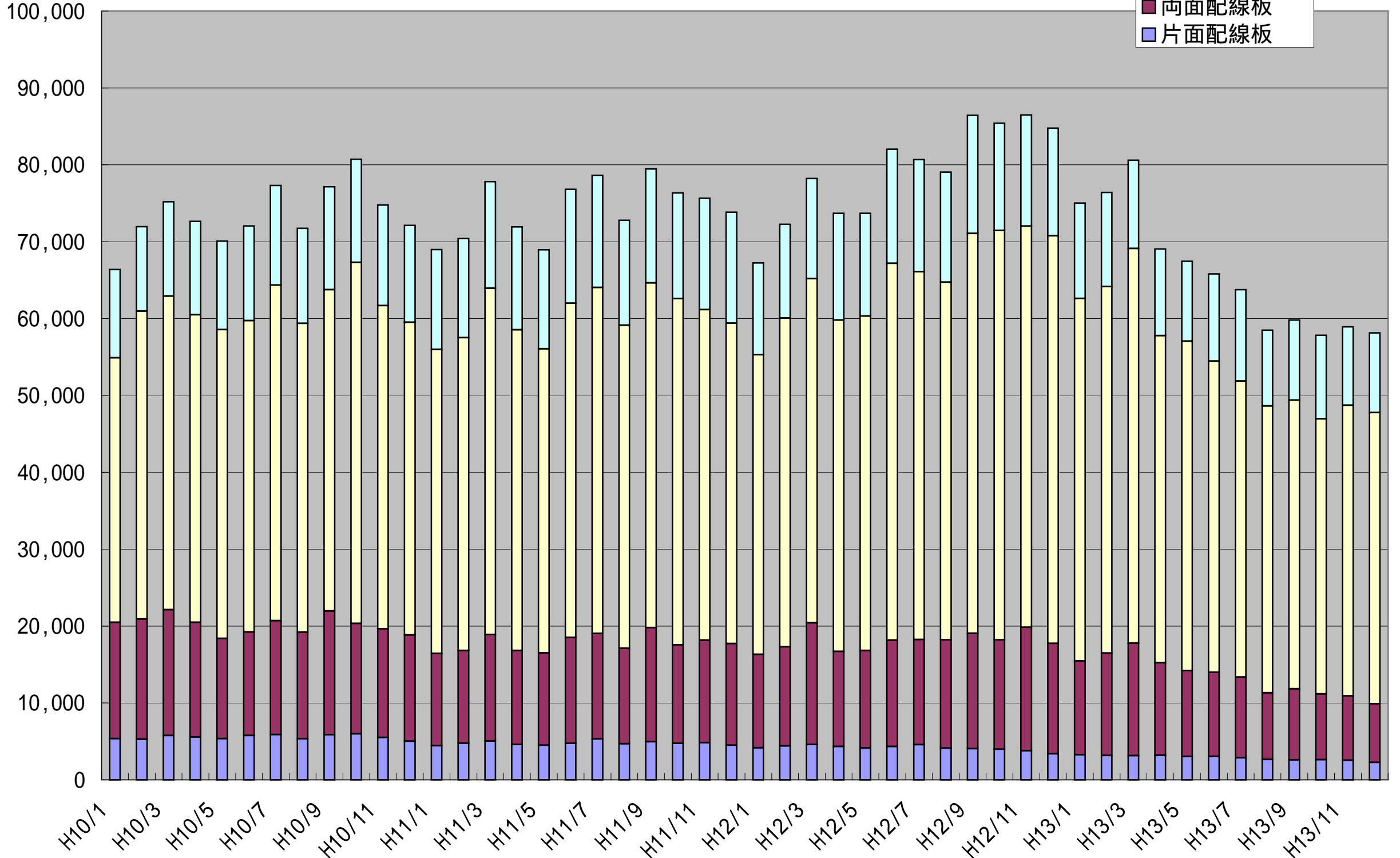
月生産金額推移	1
月生産数量推移	2
品種別月生産金額推移	3
品種別月生産数量推移	4
四半期生産金額推移	5
四半期生産数量推移	6
品種別四半期生産金額推移	7
品種別四半期生産数量推移	8
年生産金額推移	9
年生産数量推移	10
品種別年生産金額推移	11
品種別年生産数量推移	12

平成14年8月26日

社団法人日本プリント回路工業会

プリント配線板月生産金額推移

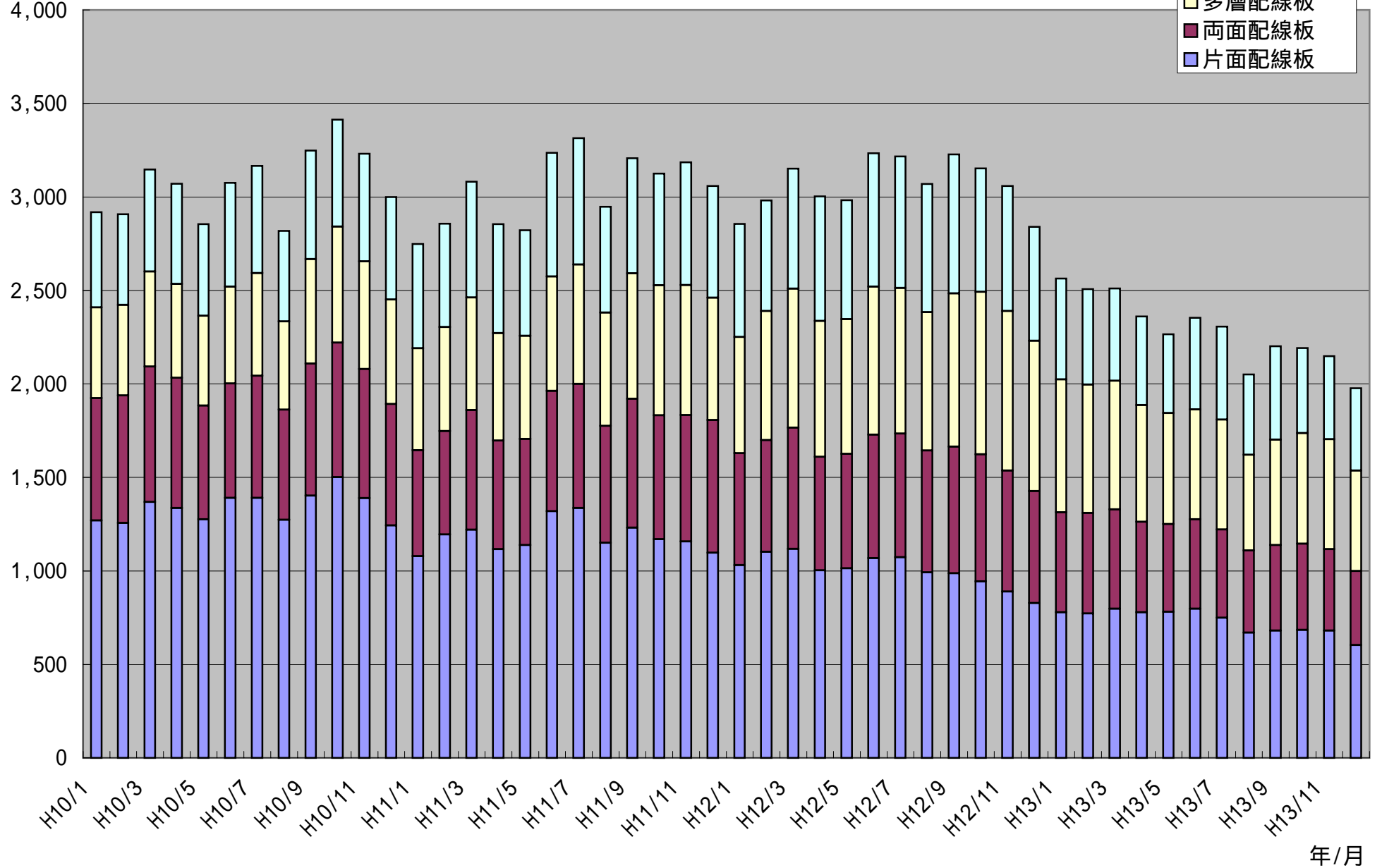
生産金額(百万円/月)



年/月

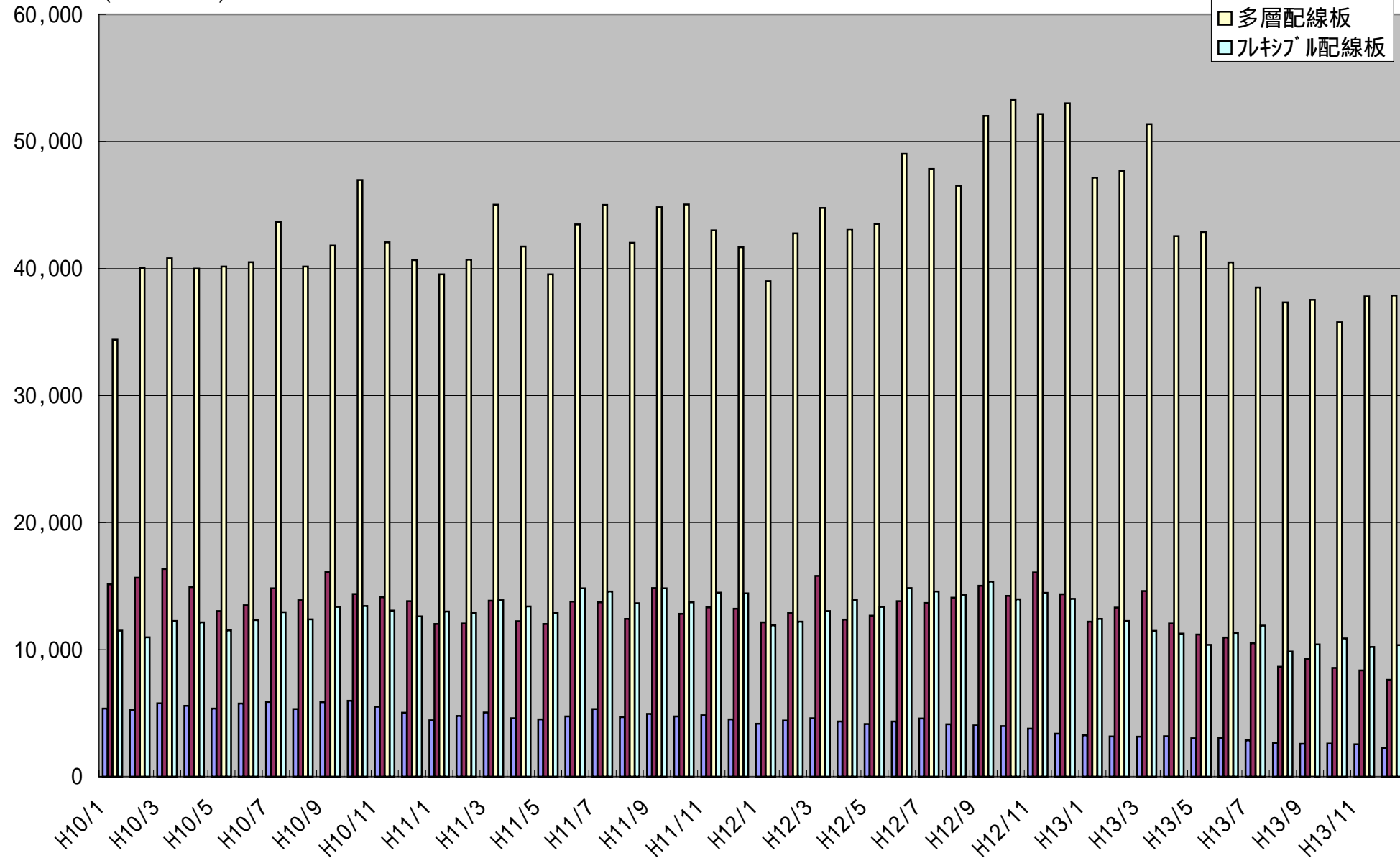
プリント配線板月生産数量推移

生産数量(1,000m²/月)



プリント配線板品種別月生産金額推移

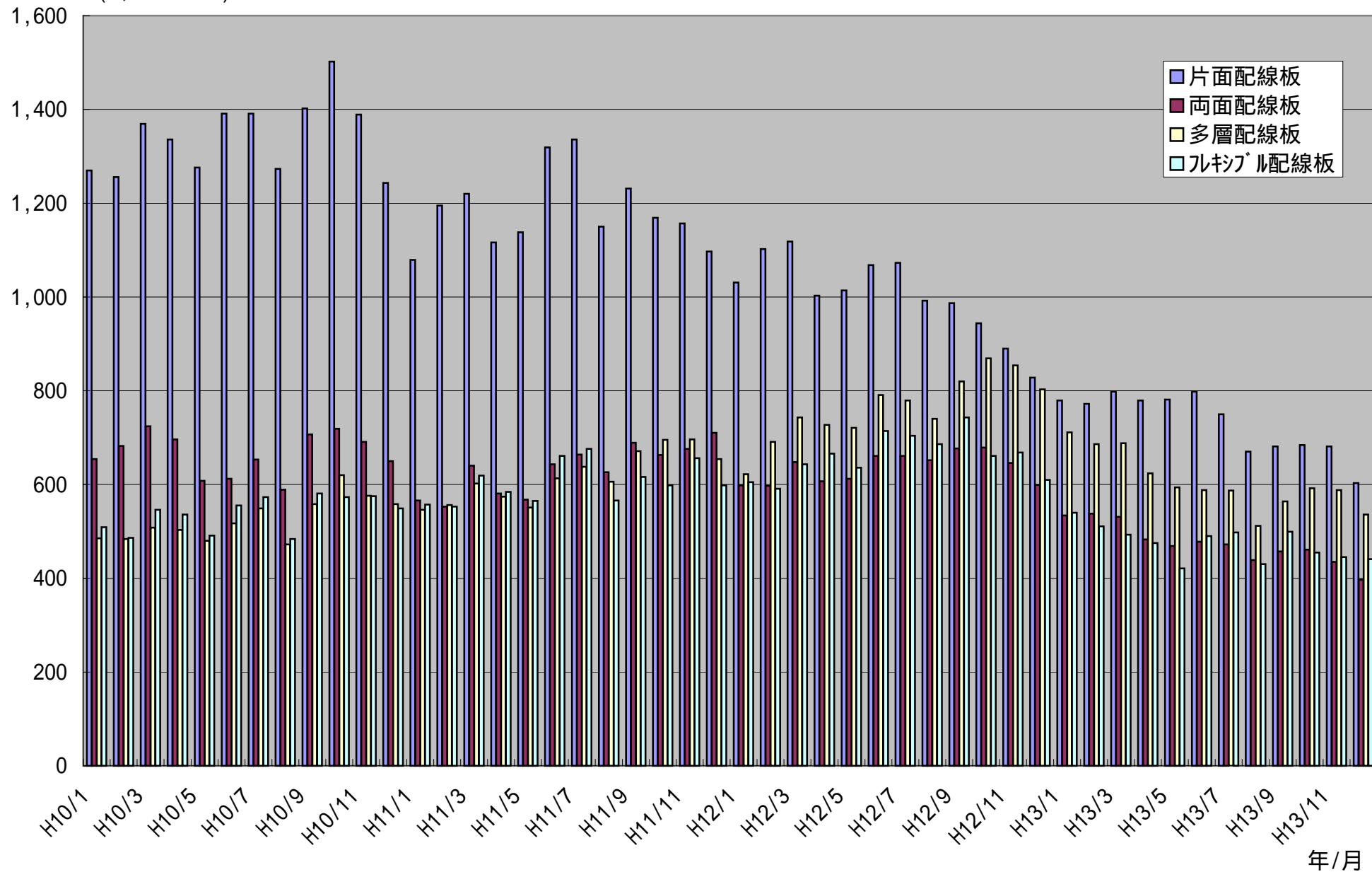
生産金額(百万円/月)



年/月

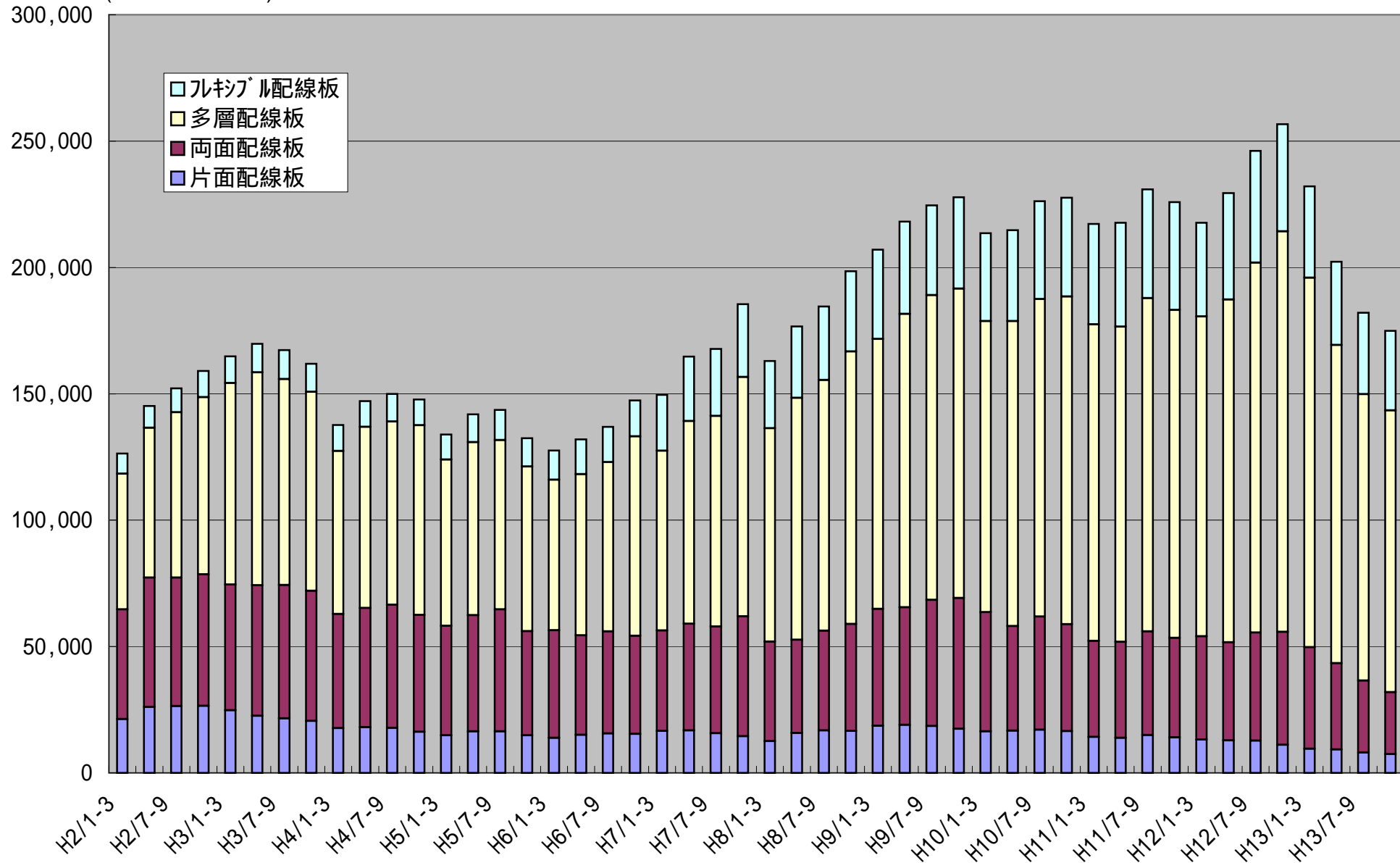
プリント配線板品種別月生産数量推移

生産数量(1,000m²/月)



プリント配線板四半期生産金額推移

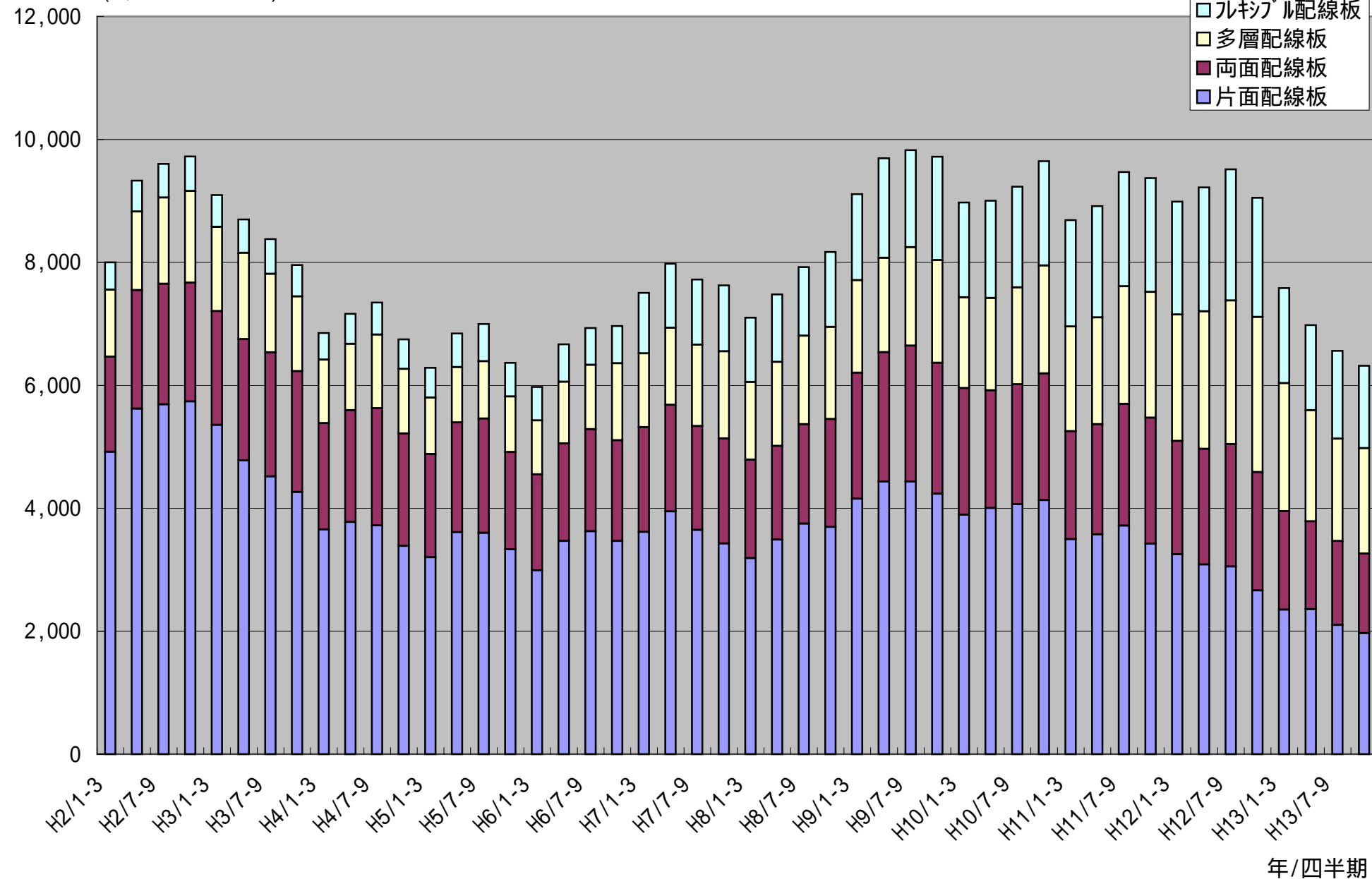
生産金額(百万円/四半期)



年/四半期

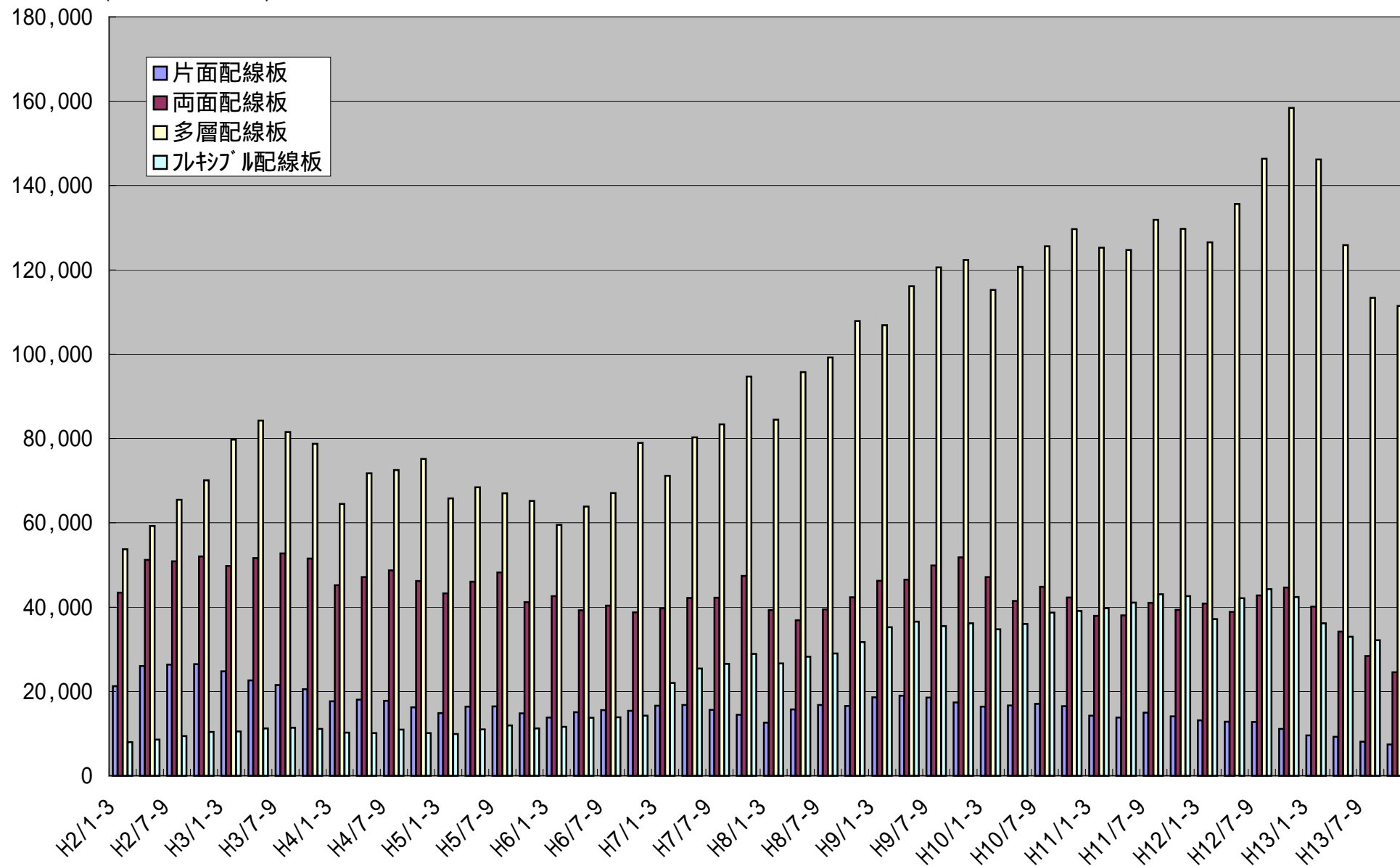
プリント配線板四半期生産数量推移

生産数量(1,000m²/四半期)



プリント配線板品種別四半期生産金額推移

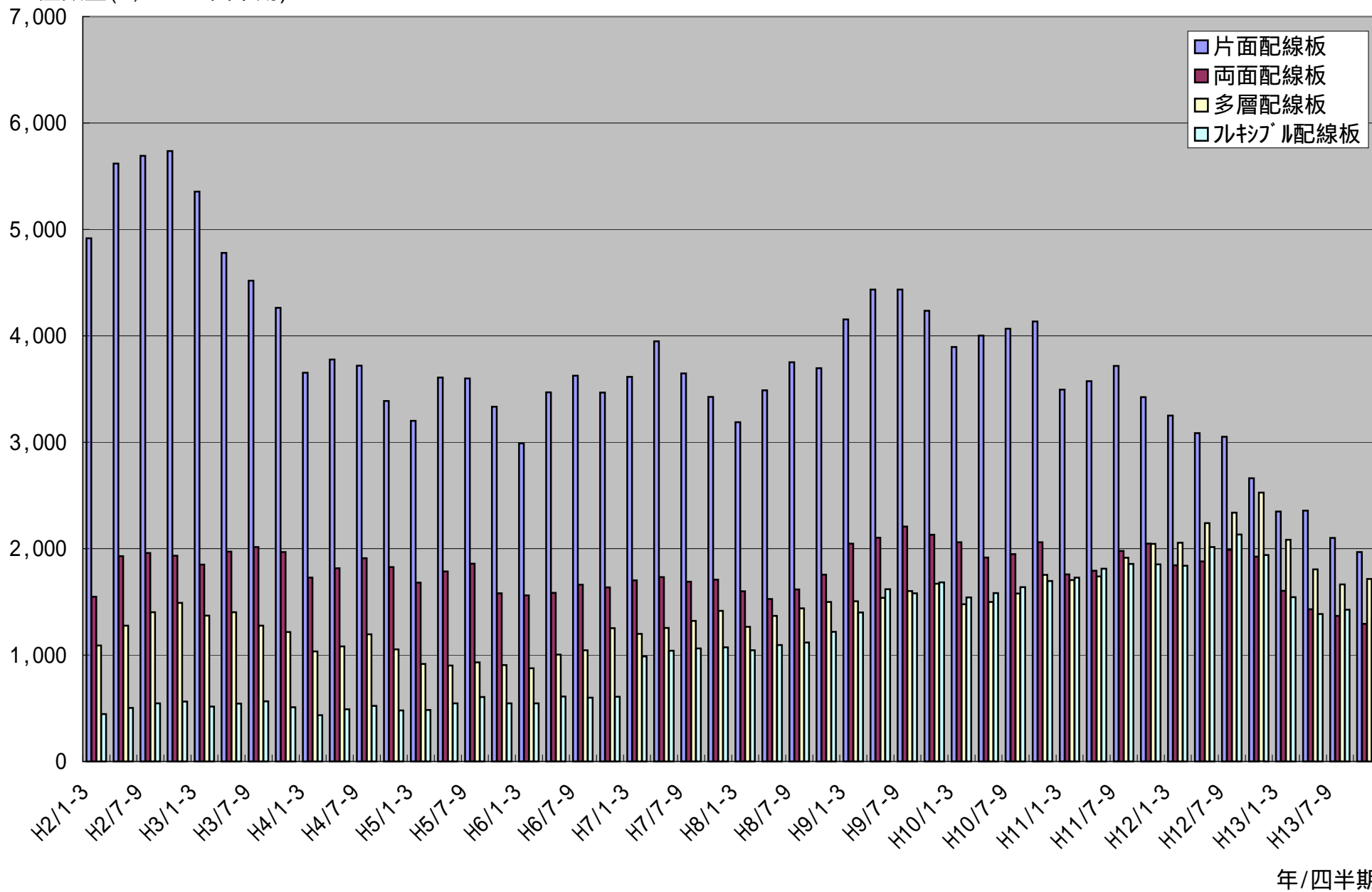
生産金額(百万円/四半期)



年/四半期

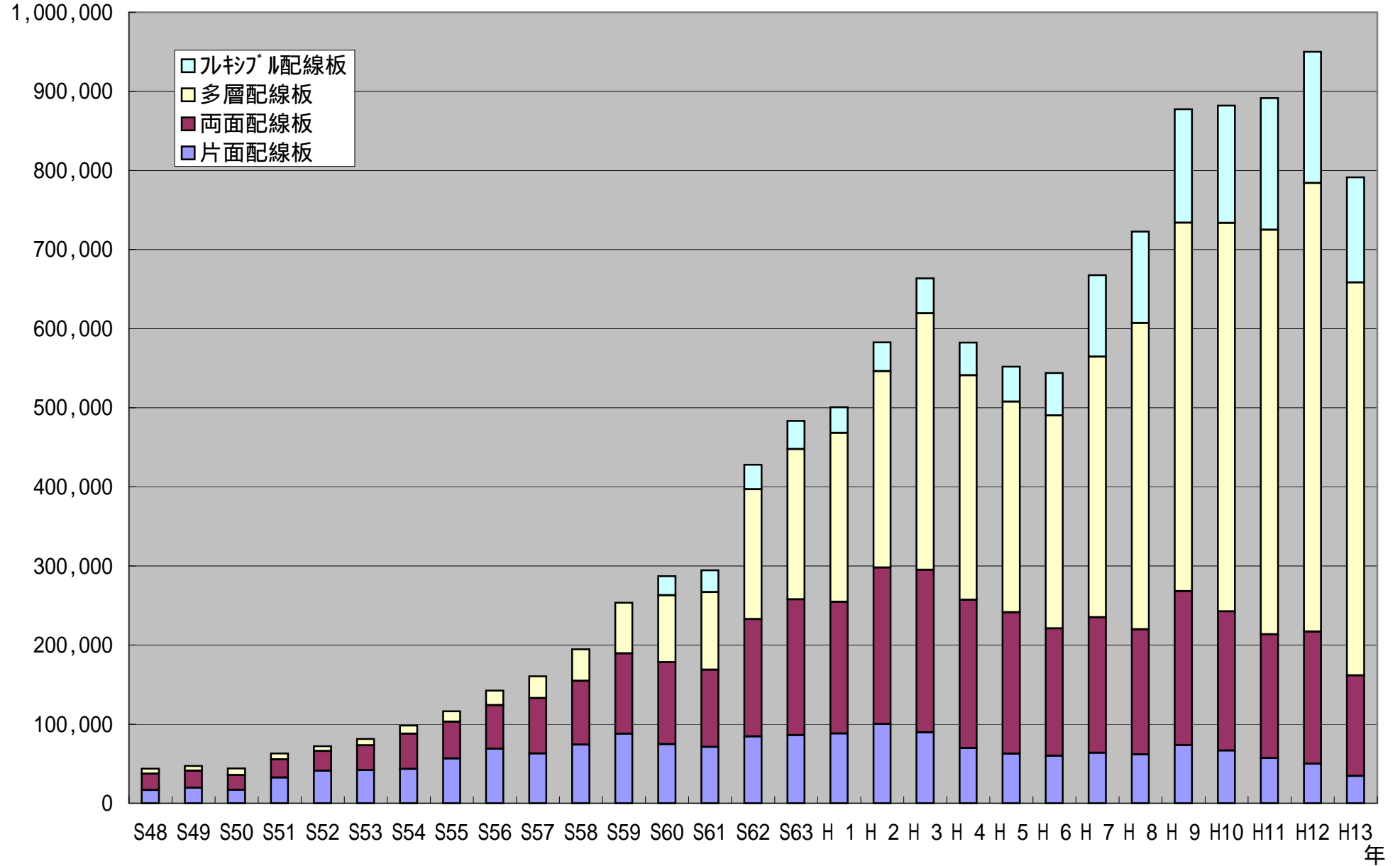
プリント配線板品種別四半期生産数量推移

生産数量(1,000m²/四半期)



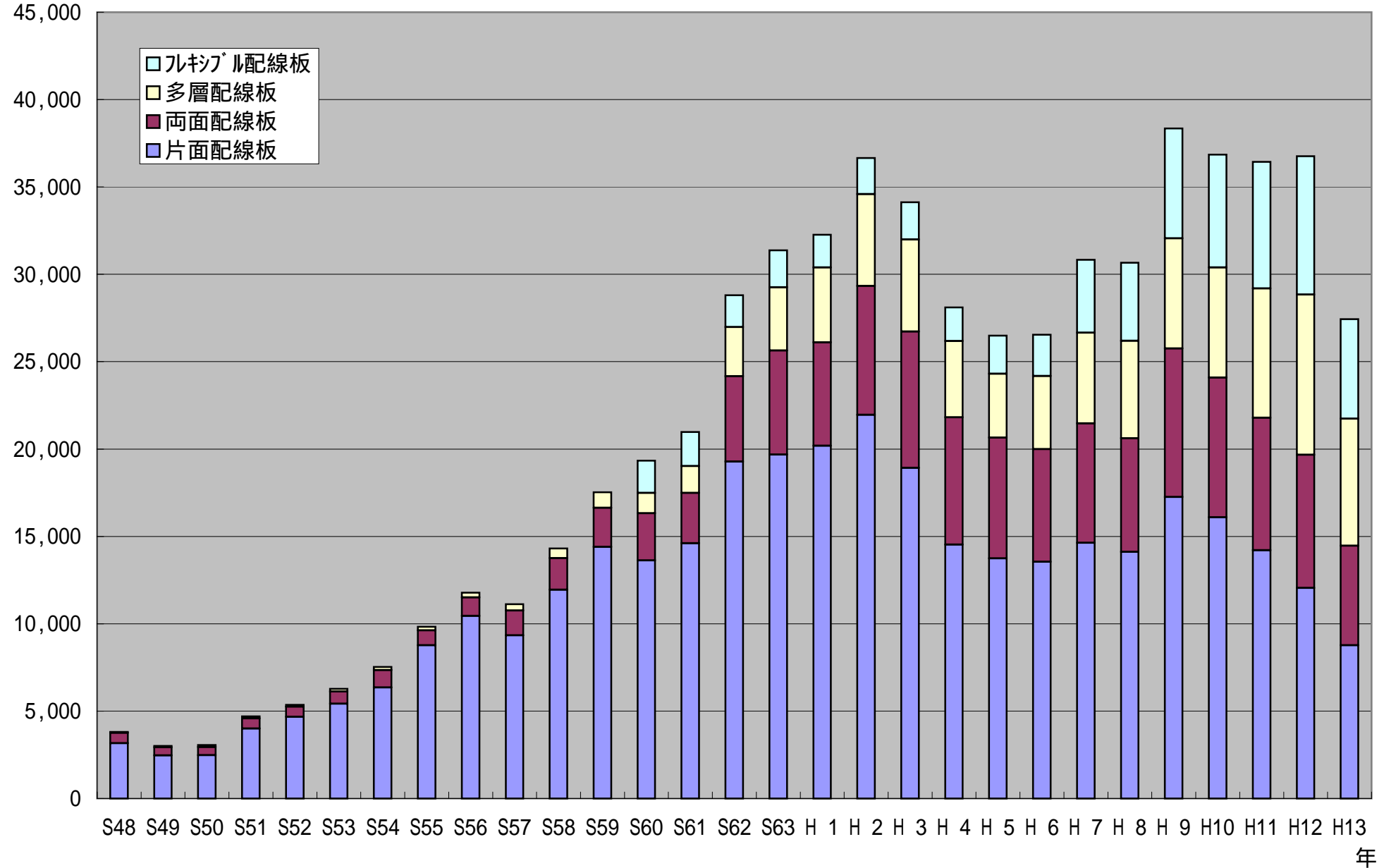
プリント配線板年生産金額推移

生産金額(百万円/年)



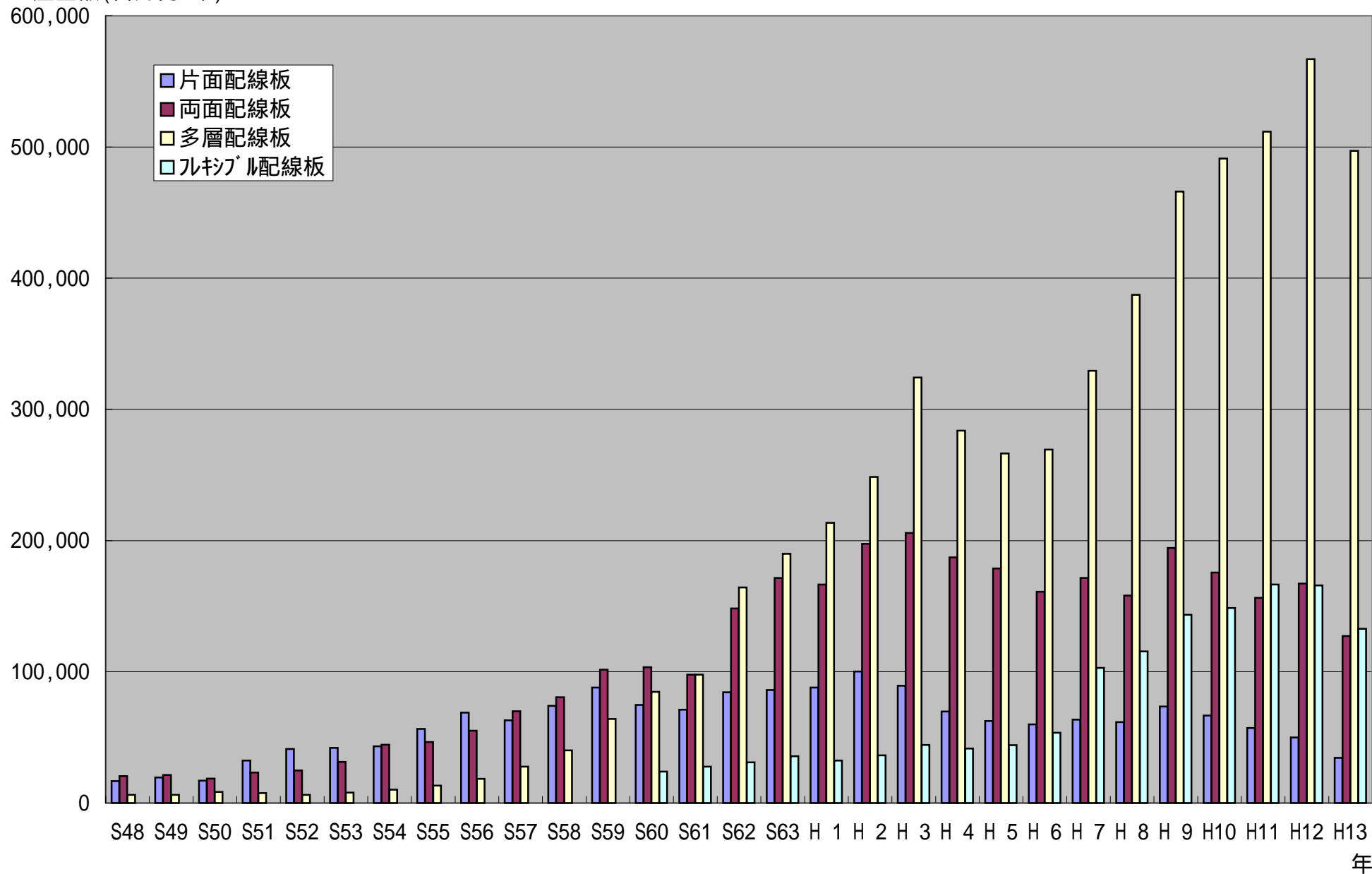
プリント配線板年生産数量推移

生産数量(1,000㎡/年)



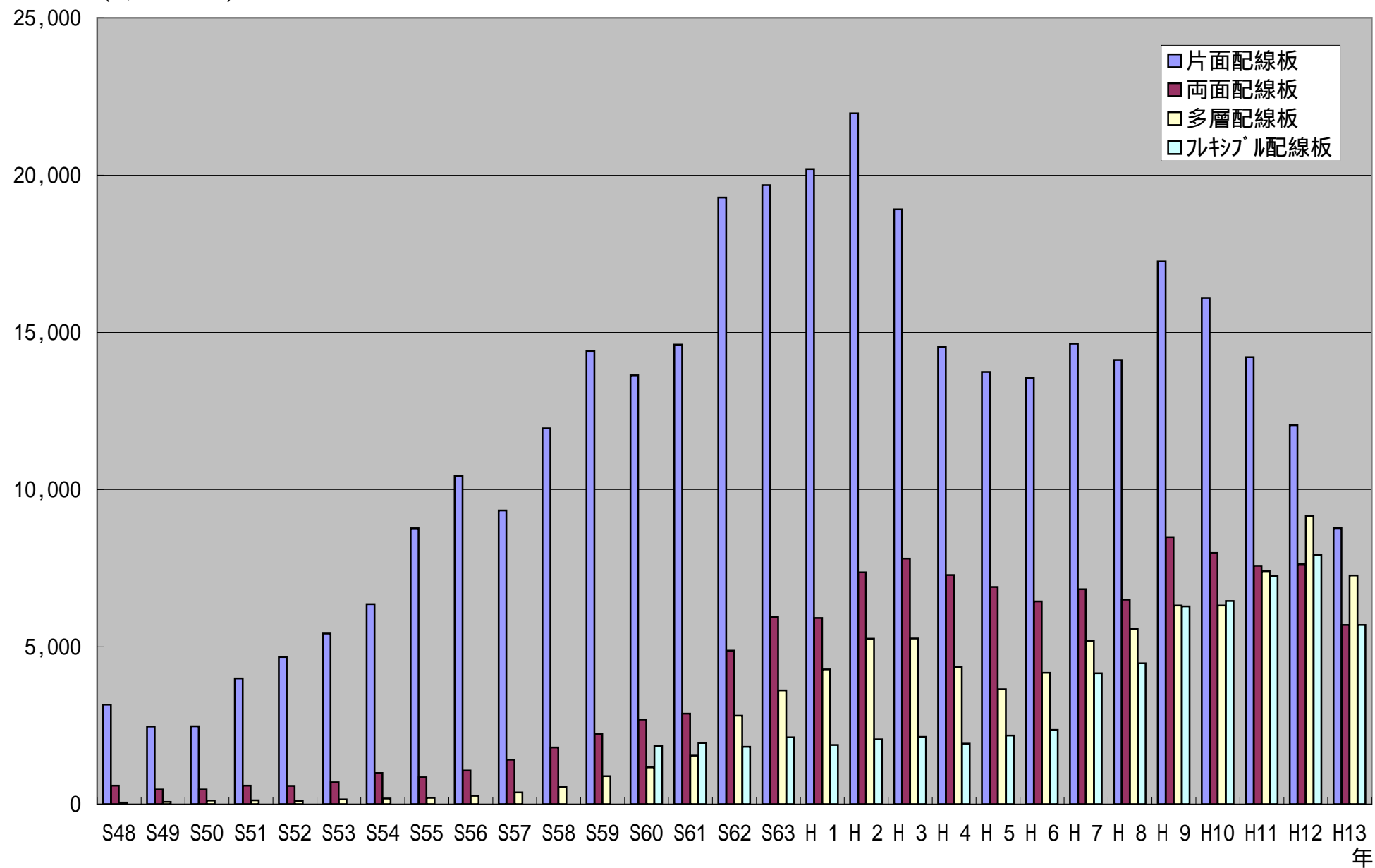
プリント配線板品種別年生産金額推移

生産金額(百万円/年)



プリント配線板品種別年生産数量推移

生産数量(1,000m²/年)



プリント配線板生産動態統計

2002.8.26

年/第 四半期	プリント配線板		リジッド配線板		片面配線板		両面配線板		多層配線板		ルミア配線板	
	数量 (千m ²)	金額 (百万円)	数量 (千m ²)	金額 (百万円)	数量 (千m ²)	金額 (百万円)	数量 (千m ²)	金額 (百万円)	数量 (千m ²)	金額 (百万円)	数量 (千m ²)	金額 (百万円)
昭和60年	19,332	287,005	17,490	263,008	13,633	74,749	2,690	103,465	1,167	84,794	1,842	23,998
61	20,970	294,485	19,027	266,801	14,610	71,126	2,875	97,775	1,542	97,900	1,943	27,684
62	28,796	427,937	26,975	396,986	19,286	84,462	4,880	148,290	2,810	164,233	1,821	30,952
63	31,379	483,230	29,255	447,653	19,683	86,139	5,957	171,510	3,615	190,003	2,124	35,577
平成1年	32,271	500,542	30,389	468,220	20,189	88,073	5,918	166,528	4,282	213,618	1,882	32,322
2	36,655	582,712	34,596	546,306	21,963	100,204	7,370	197,598	5,262	248,505	2,059	36,405
3	34,127	663,718	31,990	619,421	18,917	89,452	7,808	205,718	5,266	324,251	2,136	44,298
4	28,107	582,428	26,181	540,970	14,536	69,814	7,282	187,284	4,364	283,872	1,926	41,458
5	26,486	551,886	24,302	507,778	13,743	62,595	6,904	178,736	3,655	266,447	2,184	44,108
6	26,537	543,846	24,174	490,364	13,550	59,933	6,446	161,078	4,178	269,353	2,363	53,481
7	30,827	667,529	26,662	564,607	14,638	63,620	6,833	171,478	5,192	329,508	4,165	102,922
8	30,665	722,672	26,188	607,064	14,121	61,727	6,498	158,031	5,570	387,305	4,477	115,608
9	38,346	877,508	32,063	733,983	17,261	73,591	8,488	194,436	6,314	465,956	6,283	143,525
10	36,853	882,155	30,395	733,610	16,098	66,685	7,986	175,717	6,312	491,208	6,457	148,545
11	36,437	891,619	29,189	725,046	14,209	57,112	7,578	156,320	7,403	511,614	7,248	166,573
12	36,764	949,974	28,837	784,045	12,505	49,914	7,627	167,163	9,160	566,968	7,926	165,929
13	27,437	791,295	21,739	658,578	8,775	34,363	5,695	127,283	7,269	496,932	5,698	132,717
10年1月	2,918	66,383	2,409	54,895	1,270	5,360	654	15,141	485	34,394	509	11,488
2	2,908	71,958	2,422	60,978	1,256	5,268	682	15,663	484	40,047	486	10,979
3	3,147	75,198	2,601	62,933	1,369	5,776	724	16,350	508	40,807	546	12,265
4	3,072	72,654	2,536	60,497	1,336	5,578	696	14,917	503	40,003	536	12,157
5	2,854	70,071	2,364	58,561	1,276	5,358	608	13,042	480	40,161	491	11,510
6	3,076	72,063	2,521	59,741	1,391	5,755	612	13,480	517	40,506	555	12,322
7	3,167	77,312	2,593	64,360	1,391	5,883	653	14,829	549	43,649	573	12,951
8	2,818	71,753	2,334	59,365	1,273	5,328	589	13,886	472	40,151	484	12,388
9	3,249	77,138	2,667	63,768	1,402	5,864	707	16,101	558	41,804	581	13,370
10	3,414	80,733	2,842	67,303	1,502	5,974	719	14,367	620	46,962	573	13,431
11	3,230	74,767	2,655	61,696	1,389	5,512	691	14,121	576	42,063	575	13,071
12	3,000	72,125	2,451	59,513	1,243	5,029	650	13,822	558	40,663	549	12,612
11年1月	2,748	68,978	2,191	55,987	1,079	4,429	566	12,014	546	39,544	557	12,991
2	2,857	70,415	2,305	57,523	1,195	4,774	553	12,054	556	40,695	553	12,892
3	3,081	77,824	2,462	63,941	1,220	5,046	640	13,859	602	45,036	619	13,883
4	2,856	71,940	2,272	58,549	1,116	4,590	581	12,233	574	41,726	584	13,391
5	2,822	68,958	2,257	56,067	1,138	4,501	568	12,021	551	39,545	565	12,891
6	3,236	76,806	2,575	61,986	1,319	4,738	643	13,784	613	43,464	661	14,820
7	3,314	78,628	2,638	64,055	1,336	5,317	664	13,731	638	45,007	676	14,573
8	2,948	72,801	2,383	59,142	1,150	4,697	626	12,416	606	42,029	566	13,659
9	3,206	79,460	2,591	64,633	1,231	4,951	689	14,849	671	44,833	616	14,827
10	3,124	76,332	2,527	62,604	1,169	4,740	663	12,810	695	45,054	598	13,728
11	3,185	75,639	2,529	61,159	1,157	4,826	676	13,327	696	43,006	656	14,480
12	3,059	73,838	2,461	59,400	1,097	4,503	710	13,222	654	41,675	598	14,438
12年1月	2,857	67,230	2,252	55,311	1,031	4,164	598	12,157	622	38,990	605	11,919
2	2,980	72,260	2,390	60,065	1,102	4,410	597	12,892	691	42,763	591	12,195
3	3,151	78,225	2,509	65,192	1,118	4,603	648	15,809	743	44,780	643	13,033
4	3,003	73,706	2,338	59,802	1,003	4,345	607	12,367	727	43,090	666	13,904
5	2,984	73,688	2,348	60,335	1,014	4,146	612	12,677	721	43,512	636	13,353
6	3,233	82,041	2,519	67,189	1,068	4,345	661	13,821	791	49,023	714	14,852
7	3,208	80,668	2,503	66,089	1,073	4,580	661	13,675	779	47,834	704	14,579
8	3,070	79,050	2,384	64,731	992	4,129	652	14,084	740	46,518	686	14,319
9	3,227	86,439	2,484	71,085	987	4,044	677	15,020	820	52,021	743	15,354
10	3,153	85,417	2,492	71,454	944	3,976	679	14,222	869	53,256	661	13,963
11	3,057	86,482	2,390	72,017	890	3,779	646	16,077	854	52,161	668	14,465
12	2,840	84,768	2,230	70,775	828	3,393	599	14,362	803	53,020	610	13,993
13年1月	2,564	75,027	2,024	62,609	779	3,254	534	12,204	711	47,151	540	12,418
2	2,507	76,419	1,996	64,162	772	3,170	538	13,307	686	47,685	511	12,257
3	2,510	80,617	2,016	69,132	798	3,157	531	14,609	688	51,366	493	11,485
4	2,362	69,055	1,886	57,791	779	3,186	483	12,051	624	42,554	475	11,264
5	2,263	67,455	1,843	57,075	781	3,028	469	11,181	594	42,866	421	10,380
6	2,354	65,797	1,864	54,475	798	3,052	478	10,946	588	40,477	490	11,322
7	2,308	63,768	1,809	51,875	750	2,860	472	10,504	587	38,511	498	11,893
8	2,051	58,488	1,621	48,637	670	2,645	439	8,661	512	37,331	430	9,851
9	2,201	59,794	1,702	49,392	681	2,593	457	9,259	564	37,540	499	10,402
10	2,192	57,824	1,737	46,951	684	2,616	461	8,565	592	35,770	455	10,873
11	2,150	58,926	1,705	48,718	681	2,547	435	8,369	588	37,802	445	10,208
12	1,976	58,125	1,536	47,761	603	2,255	397	7,627	536	37,879	441	10,364
H2/1-3	8,002	126,415	7,555	118,417	4,917	21,264	1,548	43,434	1,091	53,719	445	7,997
H2/4-6	9,328	145,146	8,825	136,530	5,619	26,038	1,929	51,223	1,277	59,269	503	8,615
H2/7-9	9,601	152,124	9,054	142,731	5,691	26,398	1,959	50,889	1,403	65,444	547	9,393
H2/10-12	9,725	159,029	9,162	148,627	5,736	26,502	1,934	52,052	1,491	70,074	563	10,400
H3/1-3	9,094	164,814	8,578	154,286	5,356	24,774	1,851	49,773	1,370	79,739	517	10,528
H3/4-6	8,696	169,762	8,153	158,517	4,779	22,606	1,973	51,658	1,402	84,253	543	11,244
H3/7-9	8,379	167,261	7,812	155,848	4,519	21,548	2,016	52,764	1,277	81,538	566	11,412
H3/10-12	7,957	161,882	7,447	150,768	4,263	20,524	1,967	51,523	1,217	78,722	510	11,112
H4/1-3	6,851	137,613	6,415	127,374	3,654	17,674	1,729	45,207	1,034	64,492	435	10,240
H4/4-6	7,164	147,079	6,674	136,956	3,777	18,078	1,816	47,146	1,081	71,732	490	10,123
H4/7-9	7,346	149,990	6,825	139,037	3,720	17,806	1,909	48,725	1,195	72,506	523	10,953
H4/10-12	6,745	147,746	6,267	137,603	3,387	16,256	1,827	46,206	1,054	75,141	479	10,143
H5/1-3	6,281	133,911	5,797	123,975	3,202	14,882	1,681	43,283	916	65,810	484	9,936
H5/4-6	6,842	141,876	6,295	130,859	3,609	16,426	1,785	46,005	902	68,429	546	11,016
H5/7-9	6,998	143,658	6,390	131,719	3,600	16,449	1,859	48,2				